



**GUMC**  
GULFVIEW UNITED METHODIST CHURCH

**Physical Address**  
245 Wisteria Lane  
PCB, FL 32413

**THE BREEZE**  
February 2025



**SUNDAY WORSHIP TIMES**

**Sunday Study Classes**  
8:45 a.m.

**Worship—10 a.m.**

**Pastor: Rev. Brad Zimanek**

**OFFICE HOURS**

Monday - Thursday  
8 a.m. - 3:30 p.m.

**PHONE: 850.234.2889**

**MAILING ADDRESS**

P.O. Box 20188  
PCB, FL 32417

**Office Email: gulfviewofc@gmail.com**

**Treasurer Email: treasumc@gmail.com**

**Finance Secretary Email:**  
gulfviewfinancialsecretary@gmail.com

**Website: www.gulfviewatthebeach.org**

**Facebook: Gulfview Church**

**Instagram: gulfviewchurch**

**P234**

**LOOK HOW YOU HAVE HELPED IN JANUARY ...**

So many folks have been helped in January.



Gas for a Chattanooga couple stranded after their vehicle was broken into and wallet and phones stolen.

Partial electric bill paid before getting shut off in the frigid temps for mother of two teens.



Lots and lots of food for those coming to our little pantry house.

Bus tickets for a young couple trying to get to Nashville after jobs fell through here.



**RENT** help for a single woman.

Bayway trolley passes for some to be able to take care of business over the bridge in Panama City and get around town.



Sleeping bags, blankets, coats, gloves, socks and more for friends on the street.

**Examples of God's Closet furniture supplied:**

- ⇒ Single Mom with 4 children referred by Bay District school Homeless Dept. Furnished 3 BR and living room.
- ⇒ Single older man transitioning from Bay Rescue Mission. One bedroom and living room.
- ⇒ Single Mom with 4 children moving out of the Ark. Furnished 3 BR, living room and dining room.
- ⇒ Single man moving out of the Ark. Furnished 1 BR, living room and TV.
- ⇒ An elderly lady with mobility issues was given an electric recliner to help her stand from a chair.

God's Closet has been led to assist several homeless families referred from Bay District School and the Ark. We assisted them by providing temporary shelter, food and other essentials until they could find a place to go.

Philippians 2:3-4: *Do nothing out of selfish ambition or vain conceit. Rather, in humility value others above yourselves, not looking to your own interests but each of you to the interests of the others.*

**FRI.**  
**FEB. 14**

GULFVIEW UNITED METHODIST CHURCH

**Valentine's Day Dinner**

**5 P.M.**

**ENTERTAINMENT**

**\$20 EACH**  
**\$35 COUPLE**

**SPONSORED BY UMMEN**

245 Wisteria Ln. (Fellowship Hall)

**MENU**  
**STEAK**  
**BAKED POTATO**  
**SALAD**  
**ROLLS**  
**DESSERT**

Ticket purchase available in the Fellowship Hall Sundays, Feb. 2 & 9. Also, you can purchase from Juddy Stephenson, Lane Rees, Lonnie Mead and Steve Berkebile who have tickets, plus the Church Office.

# My Favorite Bible Verse

"If we confess our sins, He is faithful and just and will forgive us our sins and purify us from all unrighteousness." 1 John 1:9

Kellie's favorite Bible verse: Because He forgives! What an amazing thing we don't deserve the Grace that He gives us.



"In the same way, let your light shine before others, that they may see your good deeds and glorify your Father in heaven." Matthew 5:16

Bill B's favorite Bible verse: What better way to show Christ than thru our actions and words.

Do you have a favorite Bible verse and would like to share with others what it is and why it is so special to you? Send your verse(s) and a short reason why to the Church Office to be added to the monthly newsletter.



## NEW MEMBERS



**Ray Sprague**  
Jan. 5, 2025



**Beverly & Ed Hay**  
Jan. 19, 2025

## Stephen Ministry Update

Class has finally started for the new Stephen ministers. For this class we currently have four people - two males and two females - that are going through the class to become Stephen ministers. We are proud of them in their decision to answer the calling of becoming Stephen ministers.

Room 101 (The Jubilee Study Class) is where we currently meet every Tuesday at 10 a.m. If anyone would like to attend one class to see what it is like to help make a decision, you could come for the next training class that we are going to have. We welcome you to come look, listen and learn. Please join us in uplifting and praying for those that are attending the class currently. So that they may have a successful learning experience and be able to provide support to the community and to our congregation. Thank you.



## Hearing Loss, Dementia, and Apple AirPods Pro 2: Bridging the Gap in Hearing Health

Hearing loss is a silent but significant health issue, affecting millions of people worldwide. What's often overlooked, however, is its profound connection to cognitive decline and dementia. Research indicates that untreated hearing loss can increase the risk of dementia by up to five times. This is because struggling to hear forces the brain to overexert itself, diverting resources away from memory and cognitive function. Furthermore, social isolation, a common consequence of hearing loss, exacerbates the risk of cognitive decline.

The good news is that addressing hearing health early can have far-reaching benefits for mental well-being. This is where technology like Apple's AirPods Pro 2 enters the conversation. While not a replacement for traditional hearing aids, these devices offer features that can help users adapt to hearing challenges early, potentially slowing the progression of related cognitive effects.

The AirPods Pro 2 boast adaptive transparency, noise cancellation, and speech-enhancing features that make it easier for individuals to stay engaged in conversations and their environment. With the recent iOS updates, the AirPods Pro 2 now integrate "Conversation Boost," which amplifies voices in front of the user, making it a convenient tool for those experiencing mild hearing difficulties.

For individuals hesitant to seek traditional hearing aids due to stigma or cost, the AirPods Pro 2 can serve as a bridge solution. They offer a discreet, cost-effective entry point into hearing health, encouraging users to prioritize auditory care without feeling self-conscious. Additionally, their seamless integration with Apple's Health app allows users to monitor and manage their hearing health over time, providing data that could be valuable for discussions with healthcare providers.

While the AirPods Pro 2 are not a substitute for professional-grade hearing aids, they represent a significant step in making hearing assistance more accessible. Using these devices early on can help maintain engagement with loved ones, preserve mental sharpness, and reduce the risks associated with untreated hearing loss.

As awareness of the hearing loss-dementia connection grows, integrating tools like the AirPods Pro 2 into your daily life may offer an innovative way to support your hearing health and, in turn, your cognitive vitality. Investing in your auditory well-being today could pay dividends for your mental health in the years to come.

Speak with Don Hardy or Bobby Cox about their experiences with the Air Pod 2 Pros.







Council Report - Jan. 27, 2025

- ▶ Jack Kennedy, Finance Committee Chair, reported the Operational Cash Flow for 2024 was positive by \$33,000. A motion was made and passed to move \$20,000 to the Gulfview Roof Fund and \$10,000 to Salty Farm Ministries to be used for their Shower House and/or their specialty food truck for our friends on the street.
- ▶ Sheila Rucks, Membership Chair, reported a total membership of 139.
- ▶ Steve Berkebile, Trustee Chair, recommended the roof be replaced prior to the start of Hurricane Season on June 1. A motion was made and passed to accept the bid of \$88,000 to replace the roof on both buildings. About \$25,000 has been set aside already for this project and we have the option to finance part or use funds from our operating account or have a special fund raiser to complete the project. On our Giving Website there is already a Roof Fund option for those who wish to participate. Currently the Gulfview buildings are covered for all types of Insurance except Wind. The Florida Conference may allow the Panhandle churches to join their Comprehensive Insurance Policy in the future.
- ▶ There are several opportunities for Christian Development coming in 2025: Wednesday Night Christian Movies, Sunday morning Small Groups, Emmaus Walks for Men and Women at the Bethlehem Camp, Retreat for Ladies in August and for Men in the Spring, Stephen Ministries Classes this Spring, Lay Speaker Classes and Lay Ministry Classes in the Panhandle District. Please contact Pastor Brad or Kris in the Church Office for more information.

~ Submitted by Jo Ann Stone  
Church Council Chair



Thank you to everyone that purchased the homemade soup at our soup sale on Jan. 25. And thank you to all the ladies that provided the soup!

Beginning on Sunday, Feb. 2 and continuing through Feb. 9, we will be collecting canned soup for our Souper Bowl Sunday. The soup will be distributed to our Gulfview Food Pantry, West Bay Elementary and the Presbyterian Church, also known as the Pink Church. Pop-top cans are greatly appreciated!

~ Submitted by Kathy Hardy



Beginning Feb. 16, Pastor Brad will be starting a series on the Parables of Jesus from the book of Matthew and going through to Easter. The Parable of the Sower will be the first in the series on Feb. 23.

# The Parable of the Sower

Matthew 13:18-23



some seeds fell on the path and were eaten by birds



some seeds fell on rocks but dried up because they had no root



some seeds fell among the thorns and were choked out



still others fell on good soil and they produced 100 x more

Record breaking snow fall for the Panhandle of Florida on Jan. 21-22, 2025. Milton, FL received 9.8" and Pensacola got 8.9".

# FEBRUARY 2025

SUN	MON	TUE	WED	THU	FRI	SAT
<b>2</b> 8:45a Sunday Study Classes 10a Worship Service <b>HOLY COMMUNION</b> 11a Refreshments	<b>3</b> 1p Seaside Stitchers Room 200	<b>4</b> 10a Stephen Ministry Rm 101 <b>5p Salty Farm Meal Distribution Our Pavilion</b> 5p Choir Rm 100	<b>5</b>  <b>5-7p Movie/Discussion</b> <i>Wide Awake</i>	<b>6</b> 8:30a Men's Breakfast, Prayer, Bible Study F.H. 9a Women CBS Room 101	<b>7</b> Church Office Closed	<b>1 / 8</b>
<b>"SOUPER BOWL" — UWF COLLECTING CANNED SOUPS (POP-TOP PREFERRED) THROUGH FEB. 9. BRING CANS TO FELLOWSHIP HALL.</b>						
<b>9</b> 8:45a Sunday Study Classes 10a Worship Service 11a Refreshments <b>"SOUPER BOWL"</b>	<b>10</b> 1p UWF Meeting Fellowship Hall	<b>11</b> 10a Stephen Ministry Rm 101 <b>5p Salty Farm Meal Distribution Our Pavilion</b> 5p Choir Rm 100	<b>12</b>  <b>5-7p Movie/Discussion</b> <i>Amazing Grace</i>	<b>13</b> 8:30a Men's Breakfast, Prayer, Bible Study F.H. 9a Women CBS Room 101	<b>14</b> Church Office Closed <b>5p Valentine Dinner</b> Fellowship Hall	<b>15</b> <b>6:45a Community Breakfast</b> First UMC, PC
<b>16</b> 8:45a Sunday Study Classes 10a Worship Service 11a Refreshments	<b>17</b> 1p Seaside Stitchers Room 200	<b>18</b> 10a Stephen Ministry Rm 101 <b>5p Salty Farm Meal Distribution Our Pavilion</b> 5p Choir Rm 100	<b>19</b>  <b>5-7p Movie/Discussion</b> <i>Jesus Revolution</i>	<b>20</b> 8:30a Men's Breakfast, Prayer, Bible Study F.H. <b>NO</b> Women CBS	<b>21</b> Church Office Closed	<b>22</b>
<b>23</b> 8:45a Sunday Study Classes 10a Worship Service 11a Refreshments	<b>24</b> 1p Seaside Stitchers Room 200 <b>6p UMM Dinner/Meeting</b> Fellowship Hall	<b>25</b> 10a Stephen Ministry Rm 101 <b>5p Salty Farm Meal Distribution Our Pavilion</b> 5p Choir Rm 100	<b>26</b>  <b>5-7p Movie/Discussion</b> <i>The Forge</i>	<b>27</b> 8:30a Men's Breakfast, Prayer, Bible Study F.H. 9a Women CBS Room 101	<b>28</b> Church Office Closed	

FEB BIRTHDAYS

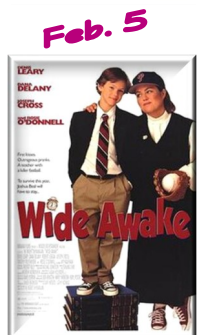
- 3 Arthur Stout**
- 4 Mary Kennedy**
- 9 Larry Tatum**
- 10 Lori Williams**
- 14 Scott Flowers**
- 15 Martha Fernandez**
- 25 Brenda Wingate**
- 28 John Seeger**

## ANNIVERSARY

- 14 Marvin & Heather Miller**



Join us for movie and discussion nights this month at 5 p.m. in the Fellowship Hall every Wednesday. If the weather is nice, we may move outside to the Pavilion for a movie. Everyone is welcome.



### Cash Flow Summary — Dec. 2024

IN	\$38,068.91
OUT	\$23,888.60

### Summary — Year End

IN	\$346,166.13
OUT	\$298,941.54

So many things in our lives can be stolen away by natural disasters, aging, and death. Satan could be appropriately called "The Thief of Always." But God is immovable and unstealable! We can invest ourselves in Him and know our spirits are secure in His care. He is a fortress and a refuge.

*I will sing of your strength, in the morning I will sing of your love; for you are my fortress, my refuge in times of trouble. —Psalm 59:16*